

Busbar processing



SH 800PLC Busbar processing station



Station for Al and Cu busbars precise cutting, bending, hole punching, inserting nuts, offsetting:

- maximum busbar dimensions 12x125 mm
- bending angle range 0° ÷ 90°

Special features:

- equipped with LED touch screen programmed in: Polish, Russian, English, German and Czech (other languages on request)
- equipped with electronic, programmable bending angle sensor (setting precision 1°)
- equipped with measuring rulers enabling precise positioning of 0,1mm
- precise height adjustment of hole punching head (0,2mm precision)
- burr-free round and oval holes punching
- burr-free busbars cutting
- built-in reliable hydraulic drive
- automatic identification of inserted dies
- bending angle correction complying busbar flexibility
- electronic length measurement of cut busbar (up to 6m)
- electronic length measurement of bent and punched busbar (up to 0,5 or 1,2m)
- busbar offsetting repeatability
- additional worktop
- tilt, rotatable touch screen
- equipped with control socket
- equipped with port for ERKO hydraulic heads

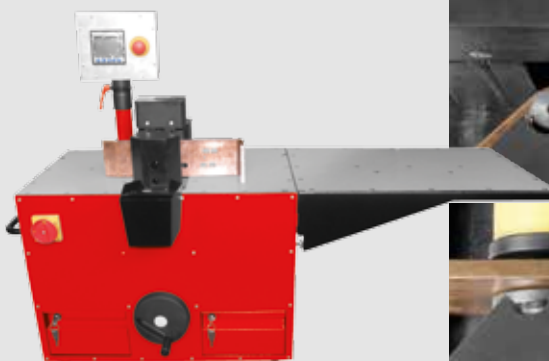
SH 400 Busbar processing station



Special features:

- Al and Cu busbars cutting, bending, hole punching, offsetting as well as inserting nuts
- maximum busbar dimensions 12x125 mm
- bending angle range $0^\circ \div 90^\circ$
- equipped with smoothly adjusted bending angle sensor
- equipped with measuring rulers
- height adjustment of hole punching head (1mm precision)
- equipped with port for ERKO hydraulic heads

SH 600 Busbar processing station



Special features:

- Al and Cu busbars bending, hole punching, offsetting as well as inserting nuts
- maximum busbar dimensions 12x125 mm
- bending angle range $0^\circ \div 90^\circ$
- equipped with smoothly adjusted bending angle sensor
- equipped with measuring rulers
- height adjustment of hole punching head (1mm precision)
- burr-free round and oval holes punching

Works with H 800 hydraulic pump and AH 100, AH 500, AH 550 electric hydraulic drives.

SH 300 Busbar Processing Station

NEW



Station for cutting, hole punching, bending and offsetting Al and Cu busbars as well as inserting nuts:

- width range: 30 ÷ 125 mm
- thickness range 5 ÷ 12 mm
- bending angle range $15^\circ \div 90^\circ$

Special features:

- equipped with an adjustable bending angle indicator (graduation rate of the resolution is 5° , measurement does not include the elasticity of the busbar)
- equipped with a bumper with scale (adjustment ruler range is 200 mm, accuracy of 1 mm)
- body height adjustment (accuracy of 1 mm)
- burr-free round and oval holes punching
- burr-free busbars cutting
- equipped with PT quick coupler

Works with H 800 hydraulic pump and AH 100, AH 500, AH 550 electric hydraulic drives.

HSk 5010 Axial bender



Special features:

- Al and Cu busbars axial bending (propeller like)
- width range 20 ÷ 50 mm
- thickness range 3 ÷ 10 mm
- bending angle range: 0° ÷ 90°
- equipped with electric sensor (limit switch) enabling repeatable bending
- equipped with spacer insert for rotatable handle, for busbars of thickness up to 5 mm
- equipped with adjustable busbar width bracket

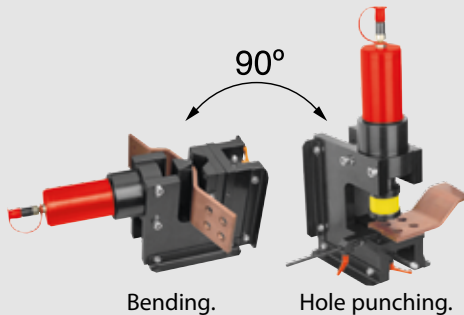
HGP 5010 Lateral bender



Special features:

- Al and Cu busbars lateral bending
- width range 20 ÷ 50 mm
- thickness range 5 ÷ 10 mm
- bending angle range: 0° ÷ 90°
- equipped with bending insert
- equipped with set of rollers for busbars of thickness 5 and 10 mm
- on request rollers for Al busbars

HGD 125 Bender – puncher



Bending.

Hole punching.



Special features:

- Al and Cu busbars bending and hole punching
- maximum busbar dimensions 10x125 mm
- bending angle range 0° ÷ 90°
- round holes punching of 6,6 ÷ 21 mm
- oval holes punching of 8,5 ÷ 21 mm
- equipped with rulers for positioning when punching holes
- electric sensor (HGD 105- limit switch) enables repeatable bending

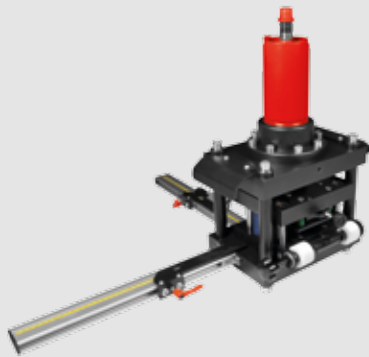
HC 125 Busbar cutter



Special features:

- Al and Cu busbars cutting
- maximum busbar dimensions 12x125 mm
- cutting without deformation or burr

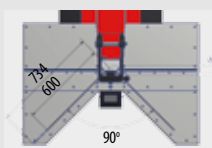
HSE 100 Flexible busbar processing station



Special features:

- flexible busbars hole punching, cutting and initial stripping
- maximum busbar dimensions 10x100 mm
- round holes punching of diameter 6,6 ÷ 21 mm
- easily exchangeable stamps and dies
- easy process of exchanging insert for stripping
- cutting accuracy due to installed rulers and centering module

HG 200 Busbar bending station



Special worktop shape enables bending of long busbars.



Minimum inner dimension of bending in C profile is 70 mm.

Station for Al and Cu busbars precise bending:

- width range 50 ÷ 200 mm
- thickness range 5 ÷ 15 mm
- bending angle range: 0° ÷ 90°

Special features:

- equipped with angle compensation system, consequent to flexibility of bent material
- easy in operation panel, minimizing time for programming
- ergonomic worktop shape assuring precise bending of long busbars
- stable construction and low weight same time
- efficient, compact electric hydraulic unit, with low need for electricity makes the device very economical

HD 160 Busbar processing station



Special features:

- Al and Cu busbars hole punching with cutting option (HC160 cutter) or bending option (HG160 bender)
- maximum busbar width 160 mm
- busbar thickness 5 ÷ 13 mm
- maximum busbar length 3m
- equipped with measuring rulers enabling precise positioning of 0,1mm
- hole punching in incomplete material
- oval holes punched parallel or along processed busbar
- burr-free busbar cutting, without deformation (applies to HC160)

