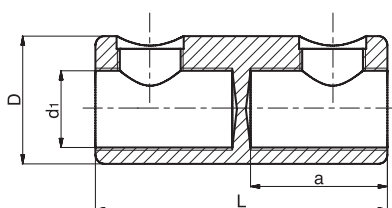


SZN Shear off screw connector

up to 1 kV



Material:
tinned aluminum body
standard tinned brass screws
or of special aluminum alloy

Symbol	Al conductor cross section [mm ²]				rm	Cu [mm ²]		d ₁ [mm]	D [mm]	L [mm]	a [mm]	Number of screws
	rm	re	sm	se		sm	re					
SZN 1625	16-35	16-35	16-25	16-35	10-25	10-25	10-25	9	16	40	18	2
SZN 1650	16-50	16-50	16-50	16-50	16-50	16-50	16-50	11	21	55	25	2
SZN 2595	25-95	25-95	25-95	25-95	25-95	25-95	25-95	14	25	55	25	2
SZN 25150	25-150	25-150	25-120	25-150	25-150	25-120	25-150	17,5	28	70	32,5	2
SZN 25185	35-185	25-185	25-185	25-185	25-185	25-185	25-185	21	32	80	37,5	2
SZN 120240	120-240	120-240	120-185	120-240	120-240	120-240	–	23	38	128	60	4
SZNE 120240	120-240	120-185	120-240	120-185	120-185	120-185	–	24,5	36	80	37,5	2

Production of connectors of other parameters on request:
 non tinned aluminum screws, symbol e.g. SZN 2595-A
 tinned aluminum screws, symbol e.g. SZN 2595-AT
 non tinned body, tinned aluminum screws, symbol e.g. SZN 2595-AT-N