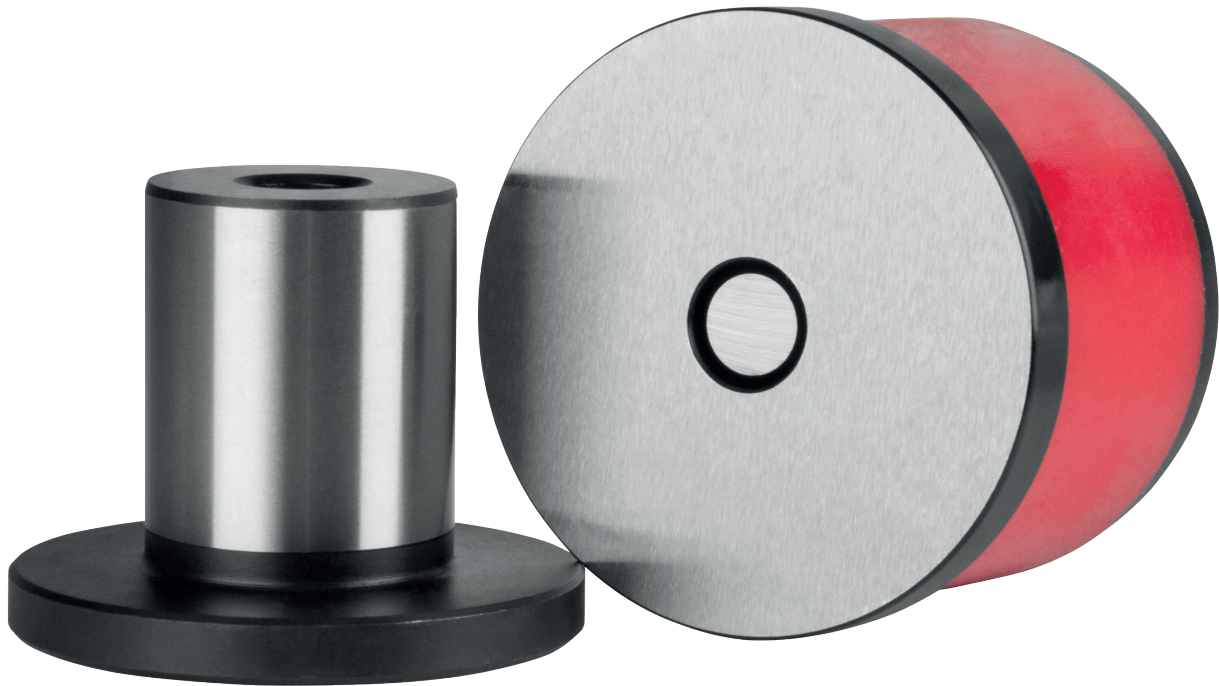


Punches SH 403



Standard dimensions of round hole punches

Symbol	Hole diameter [mm]	For M screw
SH 403 – 6,6	6,6	6
SH 403 – 8,5	8,5	8
SH 403 – 11	11	10
SH 403 – 13	13	12
SH 403 – 17	17	16
SH 403 – 21	21	20

NOTE: Punches of other dimensions on request

Dedicated tools



SH 300



SH 400



SH 900PLC