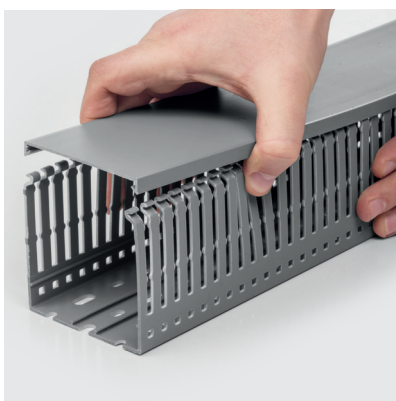
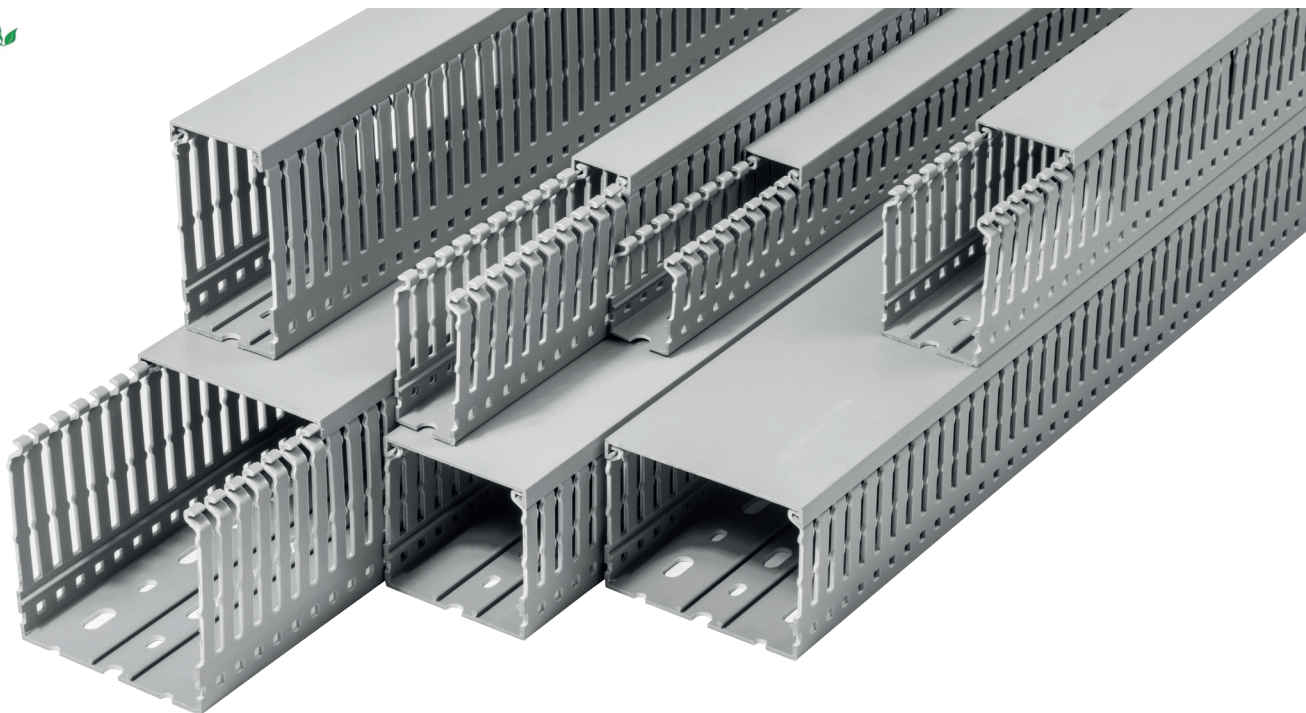


KKG Cable Trays



The cable trays used to carry electrical installations in control and switchgear cabinets.

Special features:

- base made of PCV-based technopolymer
- self extinguishable (UL 94) flammability class V0
- a perforated bottom made in accordance with DIN 43659
- simple assemble on the rail bottom
- ribs flexibility in trays allows their repeated flexing during installation

Symbol	Dimensions WxH [mm]	Length [m]	Number of pieces per unit
KKG 2540-2	25x40	2	50x2m
KKG 2560-2	25x60	2	35x2m
KKG 4040-2	40x40	2	35x2m
KKG 4060-2	40x60	2	28x2m
KKG 4080-2	40x80	2	20x2m
KKG 6040-2	60x40	2	25x2m
KKG 6060-2	60x60	2	16x2m
KKG 6080-2	60x80	2	16x2m
KKG 8080-2	80x80	2	12x2m
KKG 10080-2	100x80	2	10x2m
KKG 10060-2	100x60	2	10x2m