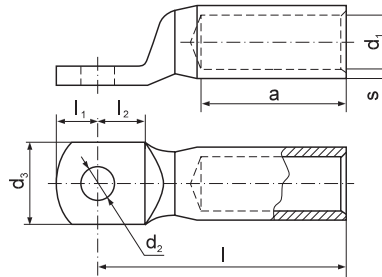


AS Tight terminal

for single- and multi-wire Al cables



Material: aluminum
According to DIN 46329

Cross section [mm ²] se	For screw rm/sm	M	d ₂ [mm]	Symbol	s [mm]	d ₁ [mm]	d ₃ [mm]	l ₁ [mm]	l ₂ [mm]	l [mm]	a [mm]	Dies discriminant	Crimping tools
25	16	8	8,4	AS 8-16*	3,2	5,6	25	10	15,5	50	30	12	R50 + as below
35	25	8	8,4	AS 8-25	2,6	6,8	25	10	15,5	50	30	12	
50	35	8	8,4	AS 8-35	3	8	25	10	15,5	62	42	14	
70	50	10	10,5	AS 10-50	3,1	9,8	25	12	15,5	62	42	16	EPZC300, EPZ300, GZ300, HRZ300, PRZ240, GO300, GU300, HR300, GU120, HR100-U, PR240, PR95A
95	70	10	10,5	AS 10-70	3,65	11,2	25	12	15,5	72	52	18	
120	95	10	10,5	AS 10-95	4,4	13,2	25	12	15,5	80*	56	22	
150	120	12	13	AS 12-120	4,15	14,7	30	13	20	80	56	22	PR240 + as below
185	150	12	13	AS 12-150	4,35	16,3	30	13	20	90	60	25	
240	185	12	13	AS 12-185	5,1	18,3	30	13	20	91	60	28	
300	240	12	13	AS 12-240	5,5	21	38	13	24	103	70	32	EPZC300, EPZ300, GZ300, HRZ300, GO300, GU300, HR300
	300	16	17	AS 16-300	5,35	23,3	38	16	24	103	70	34	
	400	16	17	AS 16-400	6,25	26	38	24	24	116	73	39	GU625
	500	20	21	AS 20-500	7,5	29	44	24	24	122	79	44	
	625	20	21	AS 20-625*	8,5	33	52	24	24	130	85	52	

* outside DIN standard

se- single-strand sector wire

rm – multi-strand round wire

sm – multi-strand sector wire

Terminals of dimensions other than in chart on request.

Connectors with contact paste on request - indicate such. AS 8-16-P.