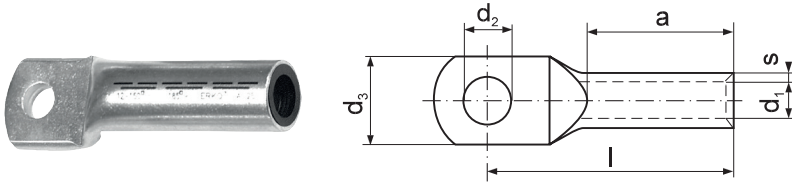


AR Tubular terminal

for single- and multi-wire Al cables



Material: aluminum
Tubular part dimensions according to DIN 46267 part 2

Cross section [mm ²]	For screw	d ₂	Symbol	s	d ₁	d ₃	l	a	Weight	Unit	Dies	Crimping tools
se	rm/sm	M	[mm]	[mm]	[mm]	[mm]	[mm]	[mm]	[g/pce]	[pcs]	discriminant	
25	16	8	AR 8-16 *	3,2	5,6	18	52	26	13,55	20	12	R50 + as below
		10	AR 10-16*						13,45			
35	25	8	AR 8-25	2,6	6,8	18	60	34	14,00	10	12	EPZC300, EPZ300, GZ300, HRZ300, PRZ240, GO300, GU300, HR300, GU120, HR100-U, PR240, PR95A
		10	AR 10-25						13,40			
50	35	10	AR 10-35	3	8	21	67	40	20,63	10	14	
		12	AR 12-35						20,70			
70	50	10	AR 10-50	3,1	9,8	25	72	42	26,00	10	16	
		12	AR 12-50						26,50			
95	70	10	AR 10-70	3,65	11,2	28	86	50	41,70	10	18	
		12	AR 12-70						40,30			
120	95	10	AR 10-95	4,4	13,2	30	90	55	66,00	10	22	
		12	AR 12-95						62,40			
		16	AR 16-95						63,20			
150	120	10	AR 10-120	4,15	14,7	32	91	60	66,00	10	22	EPZC300, EPZ300, GZ300, HRZ300, PRZ240, GO300, GU300, HR300, PR240
		12	AR 12-120						63,30			
		16	AR 16-120						68,60			
185	150	10	AR 10-150	4,35	16,3	34	103	64	88,00	10	25	
		12	AR 12-150						83,00			
		16	AR 16-150						86,20			
		20	AR 20-150						89,10			
240	185	12	AR 12-185	5,1	18,3	39	106	66	115,00	10	28	
		16	AR 16-185						122,00			
		20	AR 20-185						119,60			
300	240	12	AR 12-240	5,5	21	45	116	70	150,00	10	32	EPZC300, EPZ300, GZ300, HRZ300, GO300, GU300, HR300
		16	AR 16-240						155,00			
		20	AR 20-240						180,70			
	300	16	AR 16-300	5,35	23,3	49	124	76	180,00	1	34	
		20	AR 20-300						185,00			
	400	16	AR 16-400	6,25	26	54	139	82	310,80	1	38	
		20	AR 20-400						308,40			
	500	16	AR 16-500	7,5	29	59	148	88	448,60	1	44	GU625
		20	AR 20-500						446,10			
	625	16	AR 16-625*	8,5	35	71	152	95	540,00	1	52	
		20	AR 20-625*						585,90			

* – outside DIN standard.

se- single-strand sector wire
rm – multi-strand round wire
sm – multi-strand sector wire

Production on request. - Terminals of dimensions other than in chart.
Terminals with securing paste on request – symbol e.g. AR 8-16-P.